

Range
—
MEET



PRICELIST

OVH-HINNASTO (SIS. ALV. 25,5%) – EURO

FINLAND

01.09.2025



Range

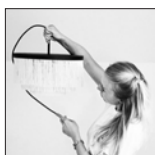
MEET

The unique feature of the MEET range is the “floating detail” between the legs and the plate.

In this pricelist you will also find some geometrical and elegant coffee tables / side tables with steel legs.

Designed by

Cecilie Kamp



This range include

Coffee tables
Stools
Side tables

Features



Design elements

Choose between different designs and products.



Custommade

In addition to our many standard sizes we can accommodate special requests.



Wood colours

Choose between more than 10+ different wood colours in both ash and oak.



Sustainable choice

Solid wood furniture can last a lifetime with proper maintenance

Social media

Follow and share with us on Instagram, Pinterest & LinkedIn.



@kristensenfurniture | #kristensenfurniture



kristensenfurniture | Kristensen & Kristensen



Kristensen & Kristensen | #kristensenfurniture

Pricelist- and imagebank

On our Collection-site you as a retailer always have access to the latest pricelists and hundreds of high resolution images and videos
- Free to use in your marketing!

If you do not have a password yet, please contact the Kristensen sales office in Denmark.

LINK:

<https://collection.kristensen.com/>

PRICELIST

3-legged stool / side table



OVERALL ITEM NO.: MEST			
(3 cm plate thickness)			
Measures (cm)	Price group	Price	
		Ash	Oak
D39 H45	1	236	295
D39 H45	2	348	435
D39 H45	3	365	457
D39 H45	4	379	474
D39 H45	5	420	517
D39 H45	6	461	556

PRICE GROUP / FABRIC

-

- 1 / Textafoam **Mine** 2 selected colours
- 2 / Textafoam **Alpine** 3 selected colours
- 3 / Nevotex **Wooly** 3 selected colours
- 3 / Nevotex **Margrethe** 1 selected colour
- 3 / Gabriel **Grain** 4 selected colours
- 4 / Sørensen Leather **Cansas** 1 selected colours
- 5 / Sørensen Leather **Ultra** 5 selected colours
- 6 / Sørensen Leather **Terra** 3 selected colours



See all the fabrics to
choose from - in the
back of this pricelist!

PRICELIST

3-legged coffee table



OVERALL ITEM NO.: MECT			
(3 cm plate thickness)			
Measures (cm)	Item no.	Price	
		Ash	Oak
D60 H45	MECT-60H45	789	1.011
D60 H50	MECT-60H50	807	1.035
D90 H45	MECT-90H45	1.155	1.480
D90 H50	MECT-90H50	1.174	1.504
D110 H45	MECT-110H45	1.435	1.838
D110 H50	MECT-110H50	1.447	1.854
D120 H45	MECT-120H45	1.609	2.061
D120 H50	MECT-120H50	1.615	2.069

PRICELIST

Round side table w/steel legs & handle



OVERALL ITEM NO.: WGR			
(3 cm plate thickness)			
Measures (cm)	Item no.	Price	
		Ash	Oak
D38 H42/54*	WGR38X42	659	725
D38 H48/60*	WGR38X48		
D42 H42/54*	WGR42X42	700	770
D42 H48/60*	WGR42X48		

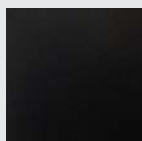
*plate hight/total hight

Leg options

5x30 mm solid steel



A
Industrial
steel



B
Black
painted steel

PRICELIST

Round coffee table w/steel legs



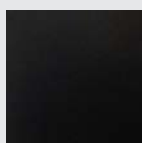
OVERALL ITEM NO.: WCI			
(3 cm plate thickness)			
Measures (cm)	Item no.	Price	
		Ash	Oak
D40 H51	WCI40X51	598	659
D40 H61	WCI40X61		
D70 H41	WCI70X41	938	1.032
D70 H51	WCI70X51		
D100 H41	WCI100X41	1.108	1.218
D100 H51	WCI100X51		

Leg options

8x30 mm solid steel



A
Industrial
steel



B
Black
painted steel



Images for guiding purpose only!

The wood structure and colour will vary from ash and oak.

We therefore recommend using the wood samples/exhibition furniture to get a more accurate impression.

WOOD COLOURS



ASH C3 / OAK C3
Lacquered

We treated this wood with lacque.

C3 are only made for products without patination.



ASH C4 / OAK C4
Natural oiled

We treated this wood with our 'Natural oil'.



ASH C6 / OAK C6
White oiled

We treated this wood with our 'White oil'.



ASH C8 / OAK C8
Soaped

We treated this wood with soap.



ASH C11 / OAK C11
Dark grey oiled

We treated this wood with our 'Black oil'.



ASH C12 / OAK C12
Antique brown oiled

We treated this wood with our 'Antique brown oil'.



ASH C13 / OAK C13
Light grey oiled

We treated this wood with our 'Light grey oil'.



ASH C14 / OAK C14
Black stained & oiled

We treated this wood with black stain, and treated it with a wax oil.

*** We recommend choosing the black matte lacquer color C44 for tabletops and chairs!**



ASH C15 / OAK C15
Mocca brown oiled

We treated this wood with our 'Mocca brown oil'.



ASH C16
Warm white oiled

We treated this wood with our 'Warm white oil'.

C16 is only for ash



ASH C20 / OAK C20
Grey brown oiled

We treated this wood with our 'Grey brown oil'.



ASH C44 / OAK C44
Black matt lacquered

We treated this wood with black stain, and treated it with matt lacque.

C44 is only for products without patination.

***Color C14 is a black stain with oil on top, which requires careful and frequent oiling. If this is not adhered to, there is a risk that the black underlying stain will rub off.**



For more information about maintenance, please visit our website:
WWW.KRISTENSEN.COM



We also offers our own repairolls for our products
- contact us if you need a pricelist.

WOOD FINISH



UP

Without patination

The wood is planned and sanded to achieve a smooth surface.

With few and smaller knots.

Storage furniture can only be made with this finish!



FK

Filled Knots

The knots are filled and the wood is planned and sanded to achieve a smooth surface.

Only for OAK!

1

Price group

MINE

Polyester Chenille

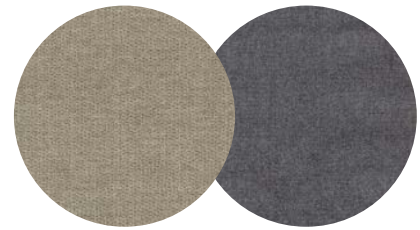
—

Mine is a soft yet durable chenille fabric with many applications.

Material: 96% Polyester, 4% Nylon
Martindale: 45.000
Maintenance: Wash or dry cleaning

Manufacturer:
www.textafoam.eu

Textafoam 



MINE
—
196 Shell

MINE
—
65 Grey

2

Price group

ALPINE

Polyester Bouclé

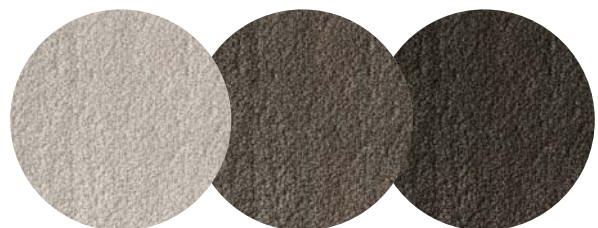
—

Alpine is a soft, voluminous and elegant bouclé woven quality.

Material: 96% Polyester 4% Acrylic Fibres
Martindale: 75.000
Maintenance: Wash or dry cleaning

Manufacturer:
www.textafoam.eu

Textafoam 



ALPINE
—
01 Natural

ALPINE
—
15 Brown

ALPINE
—
18 Darkbrown

3

Price group

WOOLY

Recycled felted wool

Wooly is made of felted recycled wool. It may be leftover material from clothing manufacturing or other wool products that are recycled. Each kilogram of pure new wool produced generates 9 kg of carbon dioxide. Processing 1 kilo of recycled wool generates just 0.5 kg of carbon dioxide.

Material: 70% recycled wool, 25% polyamide, 5% mixed fibers
Martindale: 250,000

Manufacturer:
www.nevotex.com

nevotex



3

Price group

MARGRETHE

Recycled woven wool

Margrethe is made of woven recycled wool. It may be leftover material from clothing manufacturing or other wool products that are recycled. Each kilogram of pure new wool produced generates 9 kg of carbon dioxide. Processing 1 kilo of recycled wool generates just 0.5 kg of carbon dioxide.

Material: 70% recycled wool, 25% polyamide, 5% mixed fibers
Martindale: 250,000
Maintenance: dry cleaning

Manufacturer:
www.nevotex.com

nevotex



3

Price group

GRAIN

Recycled Polyester Bouclé



Grain is a post-consumer recycled polyester bouclé fabric. The fabric is designed in two versions that playfully complement each other. Choose between a solid version and a duo-coloured version.

Material: 92% post-consumer recycled polyester / 8% polyester

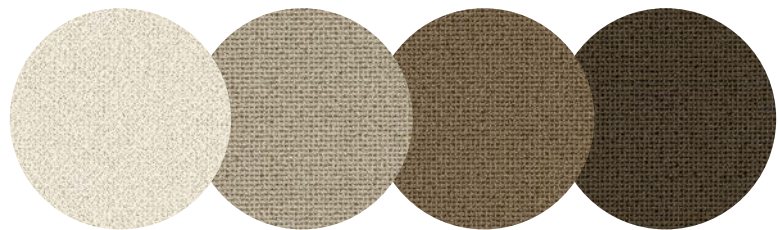
Martindale: 100,000

Maintenance: wash or dry cleaning

Manufacturer:

www.gabriel.com

nevotex



GRAIN

—
2287 / 61229

GRAIN

—
2288 / 61253

GRAIN

—
2288 / 61248

GRAIN

—
2288 / 61249

4

Price group

CANSAS

Protected leather

This protected leather is durable and made to handle everyday use. The Cansas leather comes in a classic black shade, making it a timeless and elegant choice for your dining chair.

Material: Leather

Thickness: 0.9-1.1 mm

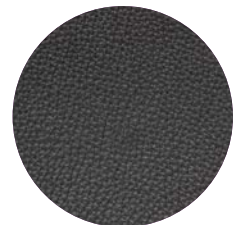
Manufacturer:

sorensenleather.com

www.nordicspoor.com



SØRENSEN



CANSAS

—
41436 Black

5

Price group

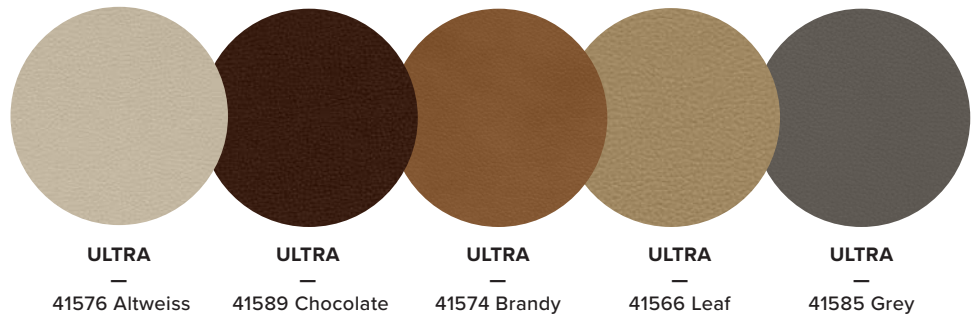
ULTRA*Protected leather*

LEATHER
STANDARD
FL024 240219
FILK

ULTRA is the perfect everyday type of leather. Buffed and embossed and truly nice to touch, the surface features a uniform grain pattern over the entire hide which gives it a consistent look. Thanks to its extremely strong protective finish, it's very easy to maintain.

Material: Leather
Thickness: 0.9 – 1.1 mm

Manufacturer:
sorensenleather.com

**SØRENSEN**

ULTRA **ULTRA** **ULTRA** **ULTRA** **ULTRA**
41576 Altweiss 41589 Chocolate 41574 Brandy 41566 Leaf 41585 Grey

6

Price group

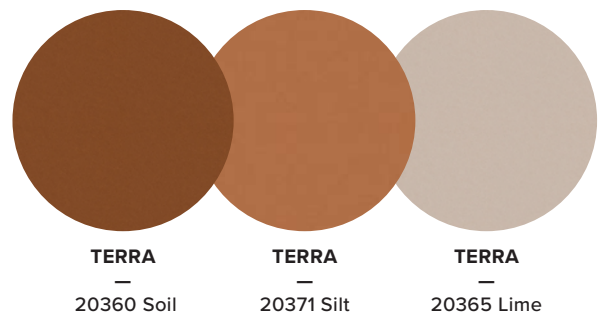
TERRA*Aniline leather*

LEATHER
STANDARD
FL024 240904
FILK

Terra is an extremely soft aniline leather featuring a silky-matt surface with a subtle shine and a velvety tactile feel that evokes one's senses, offering a touch of modern sophisticated elegance. The sanded surface with depth gives Terra a beautiful vintage look.

Material: 100% European aniline leather
Thickness: 1,2 - 1,4 mm

Manufacturer:
sorensenleather.com

**SØRENSEN**

TERRA **TERRA** **TERRA**
20360 Soil 20371 Silt 20365 Lime

OTA YHTEYTTÄ —

Olen meihin yhteydessä lisätietoja saadaksesi!

Head office, Denmark

OSOITE:

Kristensen & Kristensen A/S
Storstrømsvej 44
6715 Esbjerg N
DK - Denmark

PUHELIN:

+45 75470303

FAX:

+45 75470304

KOTISIVU:

www.kristensen.com

MAIL:

kristensen@kristensen.dk

TILAUKSET:

order@kristensen.dk

REKLAMAATIOT:

claim@kristensen.dk

Edustaja Suomessa

Jokko Salmevaara

—

✉ jokko.salmevaara@boknas.fi

☎ +358 040 195 8886