

Range
—
SYDNEY



The mark of
responsible forestry



PRICELIST

OVH-HINNASTO (sis. alv. 25,5%) - EURO

FINLAND

01.01.2024



Range

SYDNEY

The SYDNEY round table can easily be recognized by the metal detail on the curved leg. The leg provides plenty of space for chairs all the way around and the table also comes in versions with extension – with room for 4 leaves.

Designed by

Cecilie Kamp



This range include

Dining tables
Coffee tables

Social media

Follow and share with us on Instagram.



@kristensenfurniture | #kristensenfurniture

Features



Design elements

Choose between with or without extension and several different edge profiles.



Wood colours

Choose between more than 10+ different wood colours in both ash and oak.



Sustainable choice

This product is produced with Certified wood FSC® 100%.



Custommade

In addition to our many standard sizes we can accommodate special requests.

Pricelist- and imagebank

On our Collection-site you as a retailer always have access to the latest pricelists and hundreds of high resolution images and videos - **Free to use in your marketing!**

If you do not have a password yet, please contact the Kristensen sales office in Denmark.

LINK:

collection.kristensen.com

PRICELIST

SYDNEY Table (undevided)



Price: Round dining table w/undevided plate (H: 74 cm, plate thickness 3 cm)				
Description	Item no.	Price (EURO)		
		Ash	Oak	
Ø160 Undevided plate	F-SN3H-160	2.861	3.576	
Ø150 Undevided plate	F-SN3H-150	2.692	3.365	
Ø140 Undevided plate	F-SN3H-140	2.544	3.180	
Ø130 Undevided plate	F-SN3H-130	2.436	3.045	
Ø120 Undevided plate	F-SN3H-120	2.308	2.885	



Choose leg detail colour

See more information in the back of this pricelist!

- **Black steel**
- **Vintage copper look**
- **Brushed Brass**
- **Brushed Stainless steel**

Please notice

These tables are not made in sizes smaller than Ø120, or larger than Ø160 cm.

PRICELIST

SYDNEY Dining Table (extendable)

The extension system is hidden when not in use.



Price: Round dining table w/divided plate (H: 74 cm, plate thickness 3 cm)			
Description	Item no.	Price (EURO)	
		Ash	Oak
Ø160 Extension for 4 leaves*	F-SN3M-160	3.219	4.024
Ø150 Extension for 4 leaves*	F-SN3M-150	3.050	3.813
Ø140 Extension for 4 leaves*	F-SN3M-140	2.902	3.627
Ø130 Extension for 4 leaves*	F-SN3M-130	2.794	3.493
Ø120 Extension for 4 leaves*	F-SN3M-120	2.667	3.333

* Comes with 2 support legs

Leaves - For tables with divided plate (Solid wood, plate thickness 3 cm)			
Description	Item no.	Price (EURO)	
		Ash	Oak
Ø160 Leaf 50x160 cm	F-SNT3-160	479	599
Ø150 Leaf 50x150 cm	F-SNT3-150	459	574
Ø140 Leaf 50x140 cm	F-SNT3-140	440	549
Ø130 Leaf 50x130 cm	F-SNT3-130	415	519
Ø120 Leaf 50x120 cm	F-SNT3-120	383	478



Choose leg detail colour

See more information in the back of this pricelist!

- Black steel
- Vintage copper look
- Brushed Brass
- Brushed Stainless steel

Please notice

These tables are not made in sizes smaller than Ø120, or larger than Ø160 cm.

PRICELIST

SYDNEY Coffee Table



Price: Coffee table (H: 44 cm, plate thickness 3 cm)				
	Description	Item no.	Price (EURO)	
			Ash	Oak
Ø110	Undevided plate	F-SNC-110	1.590	1.988
Ø100	Undevided plate	F-SNC-100	1.552	1.940
Ø90	Undevided plate	F-SNC-90	1.522	1.902



Choose leg detail colour

See more information in the back of this pricelist!

- **Black steel**
- **Vintage copper look**
- **Brushed Brass**
- **Brushed Stainless steel**

Please notice

These coffee tables are not made in sizes smaller than Ø80, or larger than Ø120 cm.



FSC® CERTIFICATE

A commitment for a better tomorrow



We are happy to announce that from 2021 we have achieved the certification that enables us to offer FSC®-labelled products. FSC® stands for "Forest Stewardship Council" and is an international non-profit organisation dedicated to promote responsible forestry. FSC® certifies forests all over the world to ensure that they meet the highest environmental and social standards.

By signing this contract, we have committed ourselves to living up to stricter social requirements and a more sustainable production. We are proud of supporting the FSC® with their work in looking after the forest workers and the wood industry, as well as fighting unsustainable, illegal forestry and deforestation.

The FSC® certification is one of our key initiatives in creating a more sustainable production. We acknowledge that this sustainable transition is a longer journey and not something that happens overnight. But each day they we are committed in doing a little better than yesterday and keep making progress in this matter.

**PLEASE VISIT OUR WEBSITE FOR
MORE FSC® RELATED INFORMATION**

www.kristensen.com



The mark of
responsible forestry

WOOD COLOURS



Images for guiding purpose only!

The wood structure and colour will vary from ash and oak.

We therefore recommend using the wood samples/exhibition furniture to get a more accurate impression.



ASH C3 / OAK C3
Lacquered

We treated this wood with lacque.

C3 are only made for products without patination.



ASH C4 / OAK C4
Natural oiled

We treated this wood with our 'Natural oil'.



ASH C6 / OAK C6
White oiled

We treated this wood with our 'White oil'.



ASH C8 / OAK C8
Soaped

We treated this wood with soap.



ASH C11 / OAK C11
Dark grey oiled

We treated this wood with our 'Black oil'.



ASH C12 / OAK C12
Antique brown oiled

We treated this wood with our 'Antique brown oil'.



ASH C13 / OAK C13
Light grey oiled

We treated this wood with our 'Light grey oil'.



ASH C14 / OAK C14
Black stained & oiled

We treated this wood with black stain, and treated it with a wax oil.

C14 is for legs and storage furniture only!



ASH C15 / OAK C15
Mocca brown oiled

We treated this wood with our 'Mocca brown oil'.



ASH C16
Warm white oiled

We treated this wood with our 'Warm white oil'.

C16 is only for ash



ASH C20 / OAK C20
Grey brown oiled

We treated this wood with our 'Grey brown oil'.



ASH C44 / OAK C44
Black matt lacquered

We treated this wood with black stain, and treated it with matt lacque.

C44 is only for plates and can only be made for products without patination.



For more information about maintenance, please visit our website:
WWW.KRISTENSEN.COM



We also offers our own repairoils for our products
- contact us if you need a pricelist.

WOOD FINISH



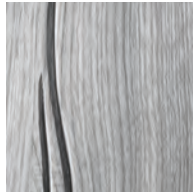
UP

Without patination

The wood is planned and sanded to achieve a smooth surface.

With few and smaller knots.

Storage furniture can only be made with this finish!

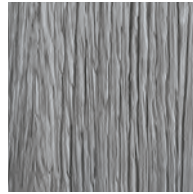


SC

Soft Cracks

Naturally occurring cracks are made more visible which gives a rustic look with cracks in the surface.

May contain more and larger knots.

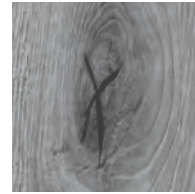


RL

Raw Look

We brush off the layer of softer wood which gives a look of wood that has been roughened by natural wear.

May contain more and larger knots.



FK

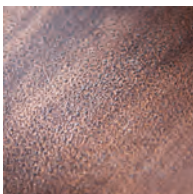
Filled Knots

The knots are filled and the wood is planned and sanded to achieve a smooth surface.

Only for OAK!

METAL COLOUR & FINISH

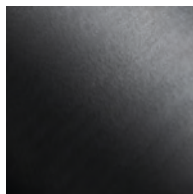
The bolts/bushes are always brass)



V

Vintage Copper ring + brass bolts/bushes

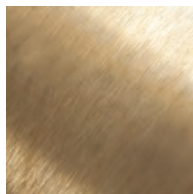
-
Rustic/tactile
Vintage Copper look .



B

Black ring + brass bolts/bushes

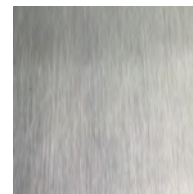
-
Black painted (powder
lacquered) steel.



M

Brushed brass ring & bolts/bushes

-
Brass will get natural
patina over time.



C

Brushed stainless steel ring & bolts/bushes

-
Brushed, stainless steel .

Do not use water or anyother liquid when cleaning – only use a dry cloth!

EDGE PROFILES



Edge profile 1

Harlekin (angled)



Edge profile 2

Arched



Edge profile 3

Pisa (rounded)



Edge profile 4

Straight

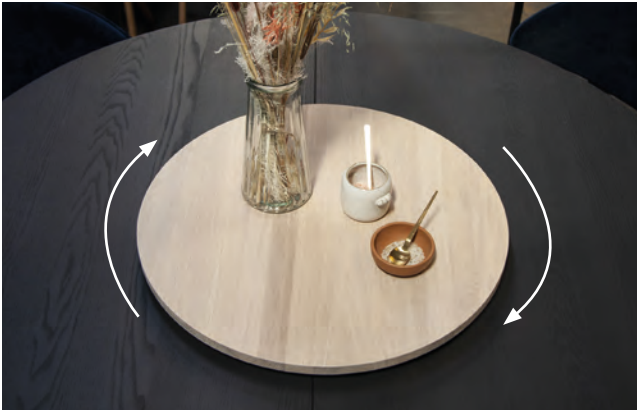


Edge profile 6

Wing

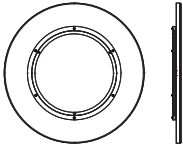
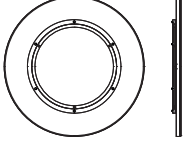
PRICELIST

Lazy Susan – turntable (rotating tray)



The plate has a turning function.
The product can be used with all our round dining tables.



Price: LAZY SUSAN, plate thickness 2 cm				
Description	Item no.	Measure (cm)		Price (EUR)
		D	H	
 Lazy Susan turning plate in ASH	LAZY-80	80	4	503
 Lazy Susan turning plate in ASH	LAZY-60	60	4	441
 Lazy Susan turning plate in OAK	LAZY-80	80	4	679
 Lazy Susan turning plate in OAK	LAZY-60	60	4	571

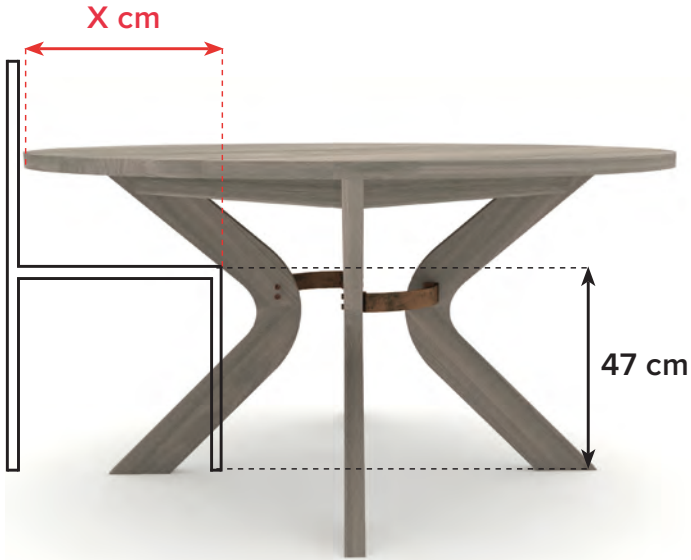
Edge profile for LAZY SUSAN



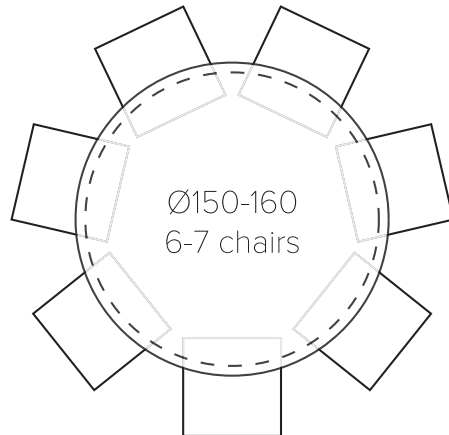
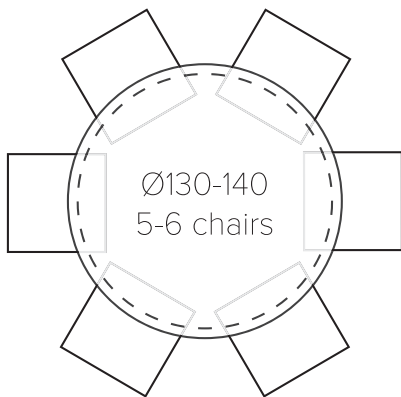
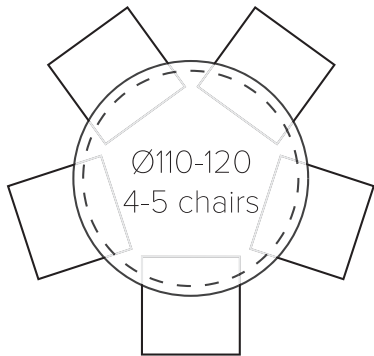
4
Straight edge

MEASURES

Measures for estimating the number of chairs fitting around these tables



- Ø120 X = 32 cm
- Ø130 X = 37 cm
- Ø140 X = 42 cm
- Ø150 X = 47 cm
- Ø160 X = 52 cm



OTA YHTEYTTÄ

MITTATILAUSPÖYDÄT

Voimme tehdä kaikkia pöytämallejimme mittojen mukaan. Mittatilaustuotteet vaativat erikoiskäsittelyä: materiaalin käsittelyä, uusia piirroksia, työstökoneiden asetusten kohdentamista sekä tuotteiden paketoitua. Tästä johtuen mittatilaustuotteisiin lisätään aina erikoistyölisä, oli tuote suurempi tai pienempi kuin standardikoko. Jos esimerkiksi haluat pöydän pienempänä, lisätään lähimpää kokoa olevan tuotteen hintaan erikoistyölisä +15%.

Olen meihin yhteydessä lisätietoja saadaksesi!

Head office, Denmark

OSOITE:

Kristensen & Kristensen A/S
Storstrømsvej 44
6715 Esbjerg N
DK - Denmark

PUHELIN:

+45 75470303

FAX:

+45 75470304

KOTISIVU:

www.kristensen.com

MAIL:

kristensen@kristensen.dk

TILAUKSET:

order@kristensen.dk

REKLAMAATIOT:

claim@kristensen.dk

Edustaja Suomessa

Jokko Salmevaara

—

✉ jokko.salmevaara@boknas.fi

☎ +358 040 195 8886