

Range  
—  
**SYDNEY**



The mark of  
responsible forestry



---

**PRICELIST**

OVH-HINNASTO (SIS. ALV. 24%) – EURO

---

**FINLAND**

01.01.2024



## Range

# — SYDNEY

The SYDNEY round table can easily be recognized by the metal detail on the curved leg. The leg provides plenty of space for chairs all the way around and the table also comes in versions with extension – with room for 4 leaves.

### Designed by

Cecilie Kamp



### This range include

—  
Dining tables  
Coffee tables

## Features



### Design elements

Choose between with or without extension and several different edge profiles.



### Wood colours

Choose between more than 10+ different wood colours in both ash and oak.



### Sustainable choice

This product is produced with Certified wood FSC® 100%.



### Custommade

In addition to our many standard sizes we can accommodate special requests.

## Social media

Follow and share with us on Instagram.



@kristensenfurniture | #kristensenfurniture

## Pricelist- and imagebank

On our Collection-site you as a retailer always have access to the latest pricelists and hundreds of high resolution images and videos - **Free to use in your marketing!**

If you do not have a password yet, please contact the Kristensen sales office in Denmark.

### LINK:

[collection.kristensen.com](https://collection.kristensen.com)

# PRICELIST

SYDNEY Table (undecided)



Price: Round dining table w/undecided plate (H: 74 cm, plate thickness 3 cm)				
Description	Item no.	Price (EURO)		
		Ash	Oak	
Ø160 Undecided plate	F-SN3H-160	<b>2.861</b>	<b>3.576</b>	
Ø150 Undecided plate	F-SN3H-150	<b>2.692</b>	<b>3.365</b>	
Ø140 Undecided plate	F-SN3H-140	<b>2.544</b>	<b>3.180</b>	
Ø130 Undecided plate	F-SN3H-130	<b>2.436</b>	<b>3.045</b>	
Ø120 Undecided plate	F-SN3H-120	<b>2.308</b>	<b>2.885</b>	



### Choose leg detail colour

See more information in the back of this pricelist!

- **Black steel**
- **Vintage copper look**
- **Brushed Brass**
- **Brushed Stainless steel**

### Please notice

These tables are not made in sizes smaller than Ø120, or larger than Ø160 cm.

# PRICELIST

## SYDNEY Dining Table (extendable)

The extension system is hidden when not in use.



Price: Round dining table w/devided plate (H: 74 cm, plate thickness 3 cm)			
Description	Item no.	Price (EURO)	
		Ash	Oak
Ø160 Extension for 4 leaves*	F-SN3M-160	<b>3.219</b>	<b>4.024</b>
Ø150 Extension for 4 leaves*	F-SN3M-150	<b>3.050</b>	<b>3.813</b>
Ø140 Extension for 4 leaves*	F-SN3M-140	<b>2.902</b>	<b>3.627</b>
Ø130 Extension for 4 leaves*	F-SN3M-130	<b>2.794</b>	<b>3.493</b>
Ø120 Extension for 4 leaves*	F-SN3M-120	<b>2.667</b>	<b>3.333</b>

\* Comes with 2 support legs

Leaves - For tables with devided plate (Solid wood, plate thickness 3 cm)			
Description	Item no.	Price (EURO)	
		Ash	Oak
Ø160 Leaf 50x160 cm	F-SNT3-160	<b>479</b>	<b>599</b>
Ø150 Leaf 50x150 cm	F-SNT3-150	<b>459</b>	<b>574</b>
Ø140 Leaf 50x140 cm	F-SNT3-140	<b>440</b>	<b>549</b>
Ø130 Leaf 50x130 cm	F-SNT3-130	<b>415</b>	<b>519</b>
Ø120 Leaf 50x120 cm	F-SNT3-120	<b>383</b>	<b>478</b>



### Choose leg detail colour

See more information in the back of this pricelist!

- Black steel
- Vintage copper look
- Brushed Brass
- Brushed Stainless steel

### Please notice

These tables are not made in sizes smaller than Ø120, or larger than Ø160 cm.

# PRICELIST

## SYDNEY Coffee Table



Price: Coffee table (H: 44 cm, plate thickness 3 cm)				
	Description	Item no.	Price (EURO)	
			Ash	Oak
Ø110	Undevided plate	F-SNC-110	<b>1.590</b>	<b>1.988</b>
Ø100	Undevided plate	F-SNC-100	<b>1.552</b>	<b>1.940</b>
Ø90	Undevided plate	F-SNC-90	<b>1.522</b>	<b>1.902</b>



### Choose leg detail colour

See more information in the back of this pricelist!

- **Black steel**
- **Vintage copper look**
- **Brushed Brass**
- **Brushed Stainless steel**

### Please notice

These coffee tables are not made in sizes smaller than Ø80, or larger than Ø120 cm.



## FSC® CERTIFICATE

*A commitment for a better tomorrow*

---

We are happy to announce that from 2021 we have achieved the certification that enables us to offer FSC®-labelled products. FSC® stands for "Forest Stewardship Council" and is an international non-profit organisation dedicated to promote responsible forestry. FSC® certifies forests all over the world to ensure that they meet the highest environmental and social standards.

By signing this contract, we have committed ourselves to living up to stricter social requirements and a more sustainable production. We are proud of supporting the FSC® with their work in looking after the forest workers and the wood industry, as well as fighting unsustainable, illegal forestry and deforestation.

The FSC® certification is one of our key initiatives in creating a more sustainable production. We acknowledge that this sustainable transition is a longer journey and not something that happens overnight. But each day they we are committed in doing a little better than yesterday and keep making progress in this matter.

**PLEASE VISIT OUR WEBSITE FOR  
MORE FSC® RELATED INFORMATION**

---

[www.kristensen.com](http://www.kristensen.com)



The mark of  
responsible forestry

# WOOD COLOURS



**Images for guiding purpose only!**

The wood structure and colour will vary from ash and oak.

We therefore recommend using the wood samples/exhibition furniture to get a more accurate impression.



**ASH C3 / OAK C3**  
Lacquered

We treated this wood with lacque.

**C3 are only made for products without patination.**



**ASH C4 / OAK C4**  
Natural oiled

We treated this wood with our 'Natural oil'.



**ASH C6 / OAK C6**  
White oiled

We treated this wood with our 'White oil'.



**ASH C8 / OAK C8**  
Soaped

We treated this wood with soap.



**ASH C11 / OAK C11**  
Dark grey oiled

We treated this wood with our 'Black oil'.



**ASH C12 / OAK C12**  
Antique brown oiled

We treated this wood with our 'Antique brown oil'.



**ASH C13 / OAK C13**  
Light grey oiled

We treated this wood with our 'Light grey oil'.



**ASH C14 / OAK C14**  
Black stained & oiled

We treated this wood with black stain, and treated it with a wax oil.

**C14 is for legs and storage furniture only!**



**ASH C15 / OAK C15**  
Mocca brown oiled

We treated this wood with our 'Mocca brown oil'.



**ASH C16**  
Warm white oiled

We treated this wood with our 'Warm white oil'.

**C16 is only for ash**



**ASH C20 / OAK C20**  
Grey brown oiled

We treated this wood with our 'Grey brown oil'.



**ASH C44 / OAK C44**  
Black matt lacquered

We treated this wood with black stain, and treated it with matt lacque.

**C44 is only for plates and can only be made for products without patination.**



For more information about maintenance, please visit our website:  
[WWW.KRISTENSEN.COM](http://WWW.KRISTENSEN.COM)



We also offers our own repairoils for our products  
- contact us if you need a pricelist.

## WOOD FINISH



**UP**

**Without patination**

The wood is planned and sanded to achieve a smooth surface.

*With few and smaller knots.*

**Storage furniture can only be made with this finish!**



**SC**

**Soft Cracks**

Naturally occurring cracks are made more visible which gives a rustic look with cracks in the surface.

*May contain more and larger knots.*

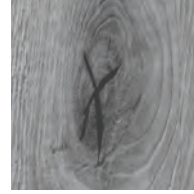


**RL**

**Raw Look**

We brush off the layer of softer wood which gives a look of wood that has been roughened by natural wear.

*May contain more and larger knots.*



**FK**

**Filled Knots**

The knots are filled and the wood is planned and sanded to achieve a smooth surface.

**Only for OAK!**

## METAL COLOUR & FINISH

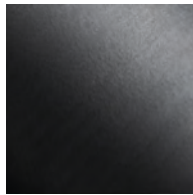
*The bolts/bushes are always brass)*



**V**

**Vintage Copper ring + brass bolts/bushes**

-  
Rustic/tactile  
Vintage Copper look .



**B**

**Black ring + brass bolts/bushes**

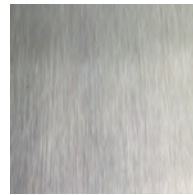
-  
Black painted (powder  
lacquered) steel.



**M**

**Brushed brass ring & bolts/bushes**

-  
Brass will get natural  
patina over time.



**C**

**Brushed stainless steel ring & bolts/bushes**

-  
Brushed, stainless steel .

**Do not use water or anyother liquid when cleaning – only use a dry cloth!**

## EDGE PROFILES



**Edge profile 1**

**Harlekin (angled)**



**Edge profile 2**

**Arched**



**Edge profile 3**

**Pisa (rounded)**



**Edge profile 4**

**Straight**



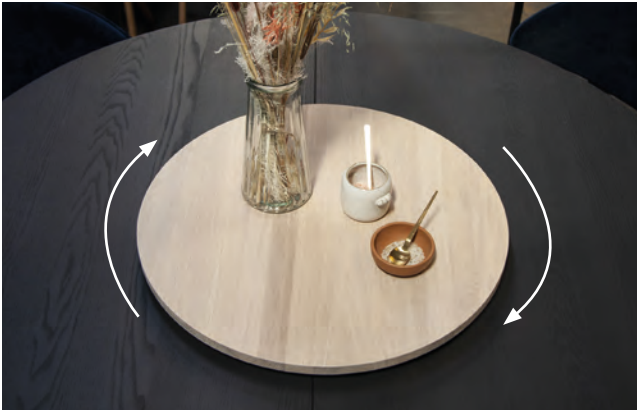
**Edge profile 6**

**Wing**



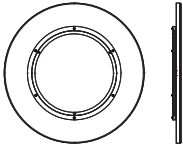
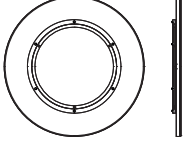
# PRICELIST

## Lazy Susan – turntable (rotating tray)



The plate has a turning function.  
The product can be used with all our round dining tables.



Price: LAZY SUSAN, plate thickness 2 cm				
Description	Item no.	Measure (cm)		Price (EUR)
		D	H	
 Lazy Susan turning plate in ASH	LAZY-80	80	4	<b>503</b>
 Lazy Susan turning plate in ASH	LAZY-60	60	4	<b>441</b>
 Lazy Susan turning plate in OAK	LAZY-80	80	4	<b>679</b>
 Lazy Susan turning plate in OAK	LAZY-60	60	4	<b>571</b>

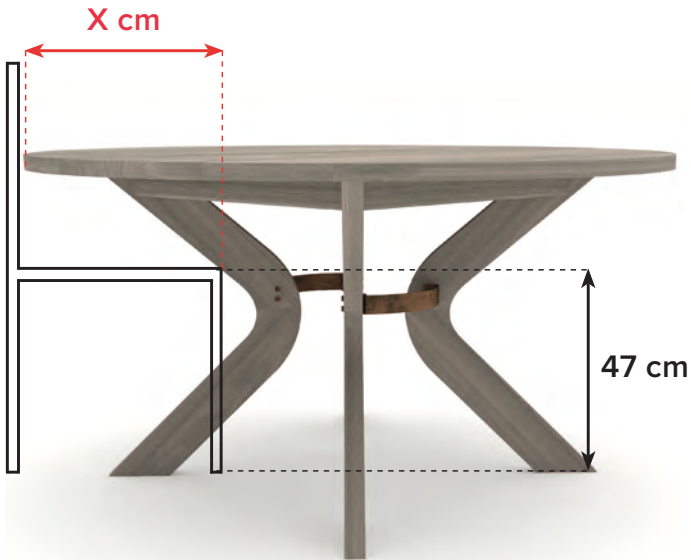
### Edge profile for LAZY SUSAN



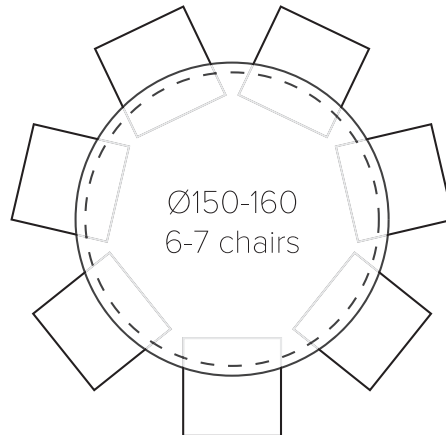
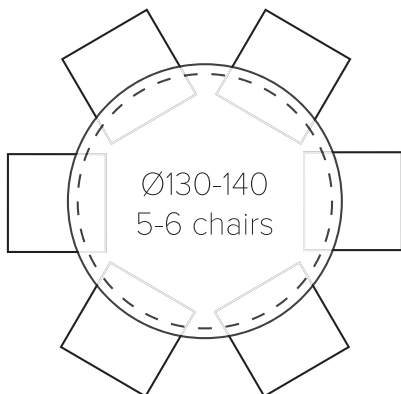
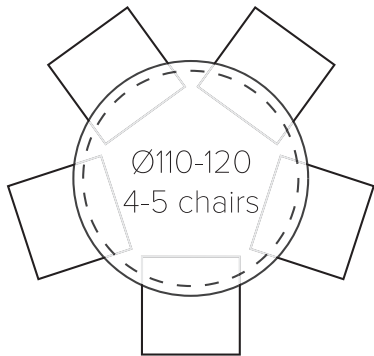
**4**  
Straight edge

# MEASURES

Measures for estimating the number of chairs fitting around these tables



- Ø120 X = 32 cm
- Ø130 X = 37 cm
- Ø140 X = 42 cm
- Ø150 X = 47 cm
- Ø160 X = 52 cm



# OTA YHTEYTTÄ

## MITTATILAUSPÖYDÄT

Voimme tehdä kaikkia pöytämallejamme mittojen mukaan. Mittatilaustuotteet vaativat erikoiskäsittelyä: materiaalin käsittelyä, uusia piirroksia, työstökoneiden asetusten kohdentamista sekä tuotteiden paketoitua. Tästä johtuen mittatilaustuotteisiin lisätään aina erikoistyölisä, oli tuote suurempi tai pienempi kuin standardikoko. Jos esimerkiksi haluat pöydän pienempänä, lisätään lähimpää kokoa olevan tuotteen hintaan erikoistyölisä +15%.

*Olen meihin yhteydessä lisätietoja saadaksesi!*

### Head office, Denmark

**OSOITE:**

Kristensen & Kristensen A/S  
Storstrømsvej 44  
6715 Esbjerg N  
DK - Denmark

**PUHELIN:**

+45 75470303

**FAX:**

+45 75470304

**KOTISIVU:**

[www.kristensen.com](http://www.kristensen.com)

**MAIL:**

[kristensen@kristensen.dk](mailto:kristensen@kristensen.dk)

**TILAUKSET:**

[order@kristensen.dk](mailto:order@kristensen.dk)

**REKLAMAATIOT:**

[claim@kristensen.dk](mailto:claim@kristensen.dk)

### Edustaja Suomessa

**Jokko Salmevaara**

—

✉ [jokko.salmevaara@boknas.fi](mailto:jokko.salmevaara@boknas.fi)

☎ +358 040 195 8886