

Range
—
COMB



The mark of
responsible forestry



PRICELIST

OVH-HINNASTO (SIS. ALV. 24%) – EURO

FINLAND

01.01.2024



Range

COMB

The COMB lounge chair is a modern classic, named after the comb-like back. The chair consists of a load-bearing construction made of solid wood, as well as reversible cushions with removable cover. A durable quality piece of furniture like the few.

Designed by

Cecilie Kamp



This range include

Lounge Chair
Foot Stool

Features



Design elements

Choose from several colours and fabrics.



Sustainable choice

This product is produced with Certified wood FSC® 100%.



Wood colours

Choose between more than 10+ different wood colours in both ash and oak.



Custommade

In addition to our many standard options we can accommodate special requests.

Social media

Follow and share with us on Instagram.



@kristensenfurniture | #kristensenfurniture

Pricelist- and imagebank

On our Collection-site you as a retailer always have access to the latest pricelists and hundreds of high resolution images and videos - **Free to use in your marketing!**

If you do not have a password yet, please contact the Kristensen sales office in Denmark.

LINK:

collection.kristensen.com

PRICELIST

Lounge Chair



COMB LOUNGE CHAIR		Item no.: F-2COMB	
Price Group	Price (EUR)		
	ASH	OAK	
1	1.250	1.480	
2	1.302	1.526	
3	1.344	1.568	
4	1.464	1.691	
5	1.976	2.203	
6	1.250	1.480	

Foam:

Cold cured molded foam.
Seat 40,6 incl. 2,19 kg, 151 N.
Back 39 incl. 2,19 kg, 124 N.

There is a difference in the hardness of the foam on the back and seat. The Kristensen & Kristensen logo is always only on the seat cushion.

Dimensions:

90,5x74 H70, SH42,75 cm.

Cover:

Removable cover.

Seat:

With elastic girths.

PRICE GROUP / FABRIC

1 / Textafoam **Mine** 2 selected colours

2 / Textafoam **Alpine** 3 selected colours

3 / Nevotex **Wooly** 3 selected colours

3 / Nevotex **Margrethe** 1 selected colour

3 / Gabriel **Grain** 4 selected colours

4 / Nordic Spoor **Sigma** 4 selected colours

5 / Sørensen Leather **Terra** 3 selected colours

6 / Alternative color within the above mentioned series. The customer buys and sends the fabric to the factory. The price covers the chair without fabric, special handling and labor for upholstery.

PRICELIST

Foot Stool



COMB FOOT STOOL		Item no.: F-COFS	
Price Group	Price (EUR)		
	ASH	OAK	
1	599	688	
2	638	724	
3	662	745	
4	729	813	
5	986	1.069	
6	599	688	

Foam:
Cold cured molded foam 40,6
incl. 2,19 kg, 151 N .

Dimensions:
66x42 H38 cm.

Cover:
Removable cover.

PRICE GROUP / FABRIC

1 / Textafoam **Mine** 2 selected colours

2 / Textafoam **Alpine** 3 selected colours

3 / Nevotex **Wooly** 3 selected colours

3 / Nevotex **Margrethe** 1 selected colour

3 / Gabriel **Grain** 4 selected colours

4 / Nordic Spoor **Sigma** 4 selected colours

5 / Sørensen Leather **Terra** 3 selected colours

6 / Alternative color within the above mentioned series. The customer buys and sends the fabric to the factory. The price covers the chair without fabric, special handling and labor for upholstery.

WOOD COLOURS



Images for guiding purpose only!

The wood structure and colour will vary from ash and oak.

We therefore recommend using the wood samples/exhibition furniture to get a more accurate impression.



ASH C3 / OAK C3
Lacquered

We treated this wood with lacque.

C3 are only made for products without patination.



ASH C4 / OAK C4
Natural oiled

We treated this wood with our 'Natural oil'.



ASH C6 / OAK C6
White oiled

We treated this wood with our 'White oil'.



ASH C8 / OAK C8
Soaped

We treated this wood with soap.



ASH C11 / OAK C11
Dark grey oiled

We treated this wood with our 'Black oil'.



ASH C12 / OAK C12
Antique brown oiled

We treated this wood with our 'Antique brown oil'.



ASH C13 / OAK C13
Light grey oiled

We treated this wood with our 'Light grey oil'.



ASH C14 / OAK C14
Black stained & oiled

We treated this wood with black stain, and treated it with a wax oil.

C14 is for legs and storage furniture only!



ASH C15 / OAK C15
Mocca brown oiled

We treated this wood with our 'Mocca brown oil'.



ASH C16
Warm white oiled

We treated this wood with our 'Warm white oil'.

C16 is only for ash



ASH C20 / OAK C20
Grey brown oiled

We treated this wood with our 'Grey brown oil'.



ASH C44 / OAK C44
Black matt lacquered

We treated this wood with black stain, and treated it with matt lacque.

C44 is only for plates and can only be made for products without patination.



For more information about maintenance, please visit our website:
WWW.KRISTENSEN.COM



We also offers our own repairoils for our products
- contact us if you need a pricelist.

1*Price group*

MINE

Polyester Chenille

Mine is a soft yet durable chenille fabric with many applications.

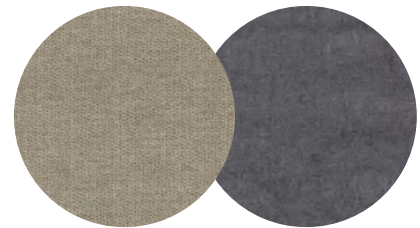
Material: 96% Polyester, 4% Nylon

Martindale: 45.000

Maintenance: Wash or dry cleaning

Manufacturer:

www.textafoam.eu

Textafoam

MINE
—
196 Shell

MINE
—
65 Grey

2*Price group*

ALPINE

Polyester Bouclé

Alpine is a soft, voluminous and elegant bouclé woven quality.

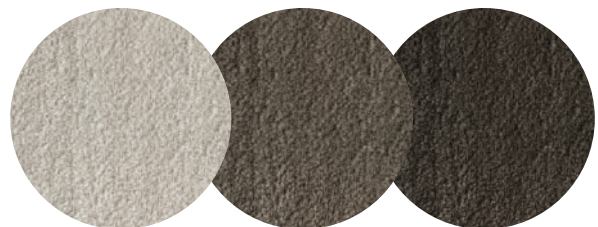
Material: 96% Polyester 4% Acrylic Fibres

Martindale: 75.000

Maintenance: Wash or dry cleaning

Manufacturer:

www.textafoam.eu

Textafoam

ALPINE
—
01 Natural

ALPINE
—
15 Brown

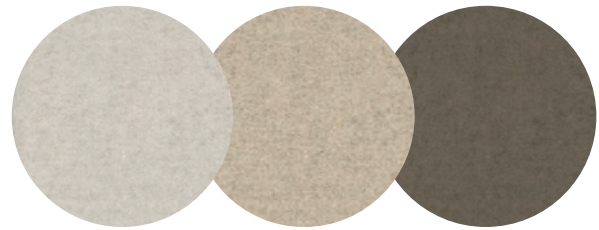
ALPINE
—
18 Darkbrown

3*Price group***WOOLY***Recycled felted wool*

Wooly is made of felted recycled wool. It may be leftover material from clothing manufacturing or other wool products that are recycled. Each kilogram of pure new wool produced generates 9 kg of carbon dioxide. Processing 1 kilo of recycled wool generates just 0.5 kg of carbon dioxide.

Material: 70% recycled wool, 25% polyamide, 5% mixed fibers
Martindale: 250,000

Manufacturer:
www.nevotex.com

nevotex**WOOLY PLUS**

—
 2256 Ivory
 Melange

WOOLY

—
 2151 Beige

WOOLY PLUS

—
 9202 Taupe

3*Price group***MARGRETHE***Recycled woven wool*

Margrethe is made of woven recycled wool. It may be leftover material from clothing manufacturing or other wool products that are recycled. Each kilogram of pure new wool produced generates 9 kg of carbon dioxide. Processing 1 kilo of recycled wool generates just 0.5 kg of carbon dioxide.

Material: 70% recycled wool, 25% polyamide, 5% mixed fibers
Martindale: 250,000
Maintenance: dry cleaning

Manufacturer:
www.nevotex.com

nevotex**MARGRETHE**

—
 16 Antracite

3

Price group

GRAIN*Recycled Polyester Bouclé*

Grain is a post-consumer recycled polyester bouclé fabric. The fabric is designed in two versions that playfully complement each other. Choose between a solid version and a duo-coloured version.

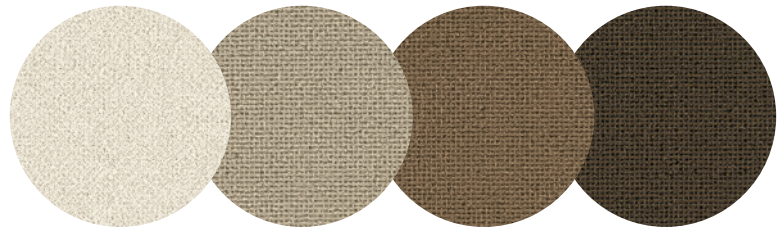
Material: 92% post-consumer recycled polyester / 8% polyester

Martindale: 100,000

Maintenance: wash or dry cleaning

Manufacturer:

www.gabriel.com

Gabriel®**GRAIN**

2287 / 61229

GRAIN

2288 / 61253

GRAIN

2288 / 61248

GRAIN

2288 / 61249

4

Price group

SIGMA*Semianiline leather*

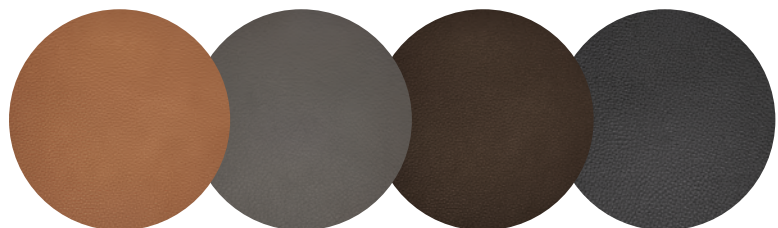
Sigma is a high quality, Argentine semianiline leather. This leather has a nice texture and a super soft feel. This leather gives a practical yet luxurious chair.

Material: 100% Argentine semianiline leather

Thickness: 1,1 - 1,3 mm

Manufacturer:

www.nordicspoor.com

SPOOR.**SIGMA**

30010 Brandy

SIGMA

30016 Sahara

SIGMA

30042 Coffee

SIGMA

30001 Black

5

Price group

TERRA

Aniline leather

Terra is an extremely soft aniline leather featuring a silky-matt surface with a subtle shine and a velvety tactile feel that evokes one's senses, offering a touch of modern sophisticated elegance. The sanded surface with depth gives Terra a beautiful vintage look.

Material: 100% European aniline leather

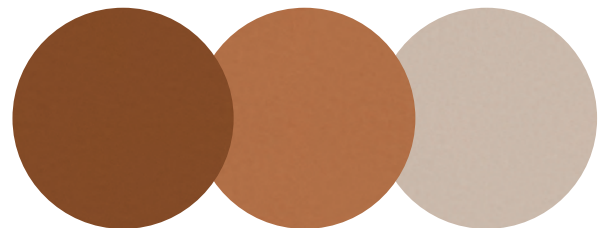
Thickness: 1,2 - 1,4 mm

Manufacturer:

sorensenleather.com



SØRENSEN



TERRA

—
20360 Soil

TERRA

—
20371 Silt

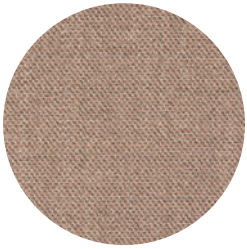
TERRA

—
20365 Lime



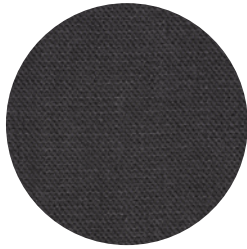
DISCONTINUED FABRICS

These fabrics will no longer be available from 31.12.24



Colour: **4803**
Range: Capture

Gabriel



Colour: **5501**
Range: Capture

Gabriel

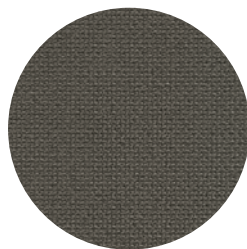
CAPTURE

This is a lightly felted and multi-coloured high quality wool fabric in a casual yet sophisticated tweed look. This fabric brings warmth and a luxurious feel to any chair.

Material: 85% wool from New Zealand / 15% polyamid

Martindale: 200,000

Maintenance: dry cleaning



Colour: **6169**
Range: Cura

Gabriel

CURA

This is a multi-purpose, two-coloured upholstery fabric made from 98% post-consumer recycled polyester. Use Cura at home or for office furniture to transform workplaces into homey interiors.

Material: 98% post-consumer recycled polyester / 2% polyester

Martindale: 100,000

Maintenance: wash or dry cleaning



FSC® CERTIFICATE

A commitment for a better tomorrow

We are happy to announce that from 2021 we have achieved the certification that enables us to offer FSC®-labelled products. FSC® stands for "Forest Stewardship Council" and is an international non-profit organisation dedicated to promote responsible forestry. FSC® certifies forests all over the world to ensure that they meet the highest environmental and social standards.

By signing this contract, we have committed ourselves to living up to stricter social requirements and a more sustainable production. We are proud of supporting the FSC® with their work in looking after the forest workers and the wood industry, as well as fighting unsustainable, illegal forestry and deforestation.

The FSC® certification is one of our key initiatives in creating a more sustainable production. We acknowledge that this sustainable transition is a longer journey and not something that happens overnight. But each day they we are committed in doing a little better than yesterday and keep making progress in this matter.

**PLEASE VISIT OUR WEBSITE FOR
MORE FSC® RELATED INFORMATION**

www.kristensen.com



The mark of
responsible forestry

OTA YHTEYTTÄ

Olen meihin yhteydessä lisätietoja saadaksesi!

Head office, Denmark

OSOITE:

Kristensen & Kristensen A/S
Storstrømsvej 44
6715 Esbjerg N
DK - Denmark

PUHELIN:

+45 75470303

FAX:

+45 75470304

KOTISIVU:

www.kristensen.com

MAIL:

kristensen@kristensen.dk

TILAUKSET:

order@kristensen.dk

REKLAMAATIOT:

claim@kristensen.dk

Edustaja Suomessa

Jokko Salmevaara

✉ jokko.salmevaara@boknas.fi

☎ +358 040 195 8886