

Range
—
LONGBOAT



PRICELIST

OVH-HINNASTO (SIS. ALV. 25,5%) – EURO

FINLAND

01.09.2025



Range

LONGBOAT

This range has a majestic and sculptural look that invites the eye to explore the design. LONGBOAT is characterized by large solid wood planks, where the shape imitates the curves from the old ships.

Designed by

Morten Pedersen



This range include

Dining Tables
Coffee Tables

Features



Design elements

Choose between different designs.



Custommade

In addition to our many standard sizes we can accommodate special requests.



Wood colours

Choose between more than 10+ different wood colours in both ash and oak.



Sustainable choice

Solid wood furniture can last a lifetime with proper maintenance.

Social media

Follow and share with us on Instagram.



@kristensenfurniture | #kristensenfurniture



kristensenfurniture | Kristensen & Kristensen



Kristensen & Kristensen | #kristensenfurniture

Pricelist- and imagebank

On our Collection-site you as a retailer always have access to the latest pricelists and hundreds of high resolution images and videos
- **Free to use in your marketing!**

If you do not have a password yet, please contact the Kristensen sales office in Denmark.


LINK:

collection.kristensen.com

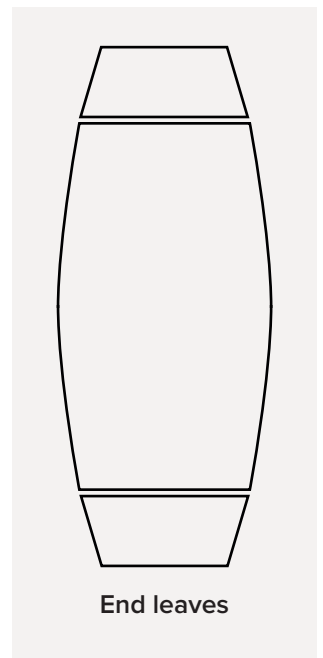
PRICELIST

LONGBOAT Dining table



LONGBOAT dining table (H: 74 cm, plate 3 cm)				
Description + Drawing	Dimensions (cm)	Item no.	Price (EUR)	
 T-legs (OP)	260X120	F-LBAD3-260-	3.018	4.820
	240x120	F-LBAD3-240-	2.772	4.381
	220x110	F-LBAD3-220-	2.705	4.279
	200x110	F-LBAD3-200-	2.523	3.969

Leaf for dining table w/30 mm plate thickness			
End leaf B: 40 cm (fits to all sizes of tabletops)			
Dimensions (cm)	Item no.	Price (EUR)	
		Ash	Oak
Longboat end leaf	F-LBE3-110	364	482



Edgeprofile 2

Arched

(Inkludes edge 2 on legs)



Edgeprofile 3

Pisa

(Inkludes edge 8 on legs)



Edgeprofile 4

Straight

(Inkludes edge 4 on legs)



Edgeprofile 6

Wing

(Inkludes edge 8 on legs)



Edgeprofile 8

Rounded

(Inkludes edge 8 on legs)

PRICELIST

LONGBOAT Round Dining table



LONGBOAT round dining table (H: 74 cm, plate 3 cm)				
Size	Description	Item no.	Price (EUR)	
			Ash	Oak
Ø160	Undevided plate	F-LBRD3H-160	2.439	3.500
Ø150	Undevided plate	F-LBRD3H-150	2.304	3.292
Ø140	Undevided plate	F-LBRD3H-140	2.168	3.084
Ø130	Undevided plate	F-LBRD3H-130	2.033	2.876
Ø120	Undevided plate	F-LBRD3H-120	1.898	2.668



Edgeprofile 2

Arched

(Inkludes edge 2 on legs)



Edgeprofile 3

Pisa

(Inkludes edge 8 on legs)



Edgeprofile 4

Straight

(Inkludes edge 4 on legs)



Edgeprofile 6

Wing

(Inkludes edge 8 on legs)



Edgeprofile 8

Rounded

(Inkludes edge 8 on legs)

PRICELIST

LONGBOAT Round Dining table w/extension



LONGBOAT round dining table w/extension (H: 74 cm, plate 3 cm)				
Size	Description	Item no.	Price (EUR)	
			Ash	Oak
Ø160	Prep. For 4 leaves	F-LBRD3M-160	2.777	3.900
Ø150	Prep. For 4 leaves	F-LBRD3M-150	2.642	3.692
Ø140	Prep. For 4 leaves	F-LBRD3M-140	2.506	3.484
Ø130	Prep. For 4 leaves	F-LBRD3M-130	2.304	3.198
Ø120	Prep. For 4 leaves	F-LBRD3M-120	2.236	3.068

Leaf for dining table w/30 mm plate thickness			
Dimensions (cm)	Item no.	Price (EUR)	
		Ash	Oak
Leaf 50x160	F-LBRT-160	553	708
Leaf 50x150	F-LBRT-150	530	679
Leaf 50x140	F-LBRT-140	507	649
Leaf 50x130	F-LBRT-130	478	613
Leaf 50x120	F-LBRT-120	441	565


Edgeprofile 2

Arched

(Inkludes edge 2 on legs)


Edgeprofile 3

Pisa

(Inkludes edge 8 on legs)


Edgeprofile 4

Straight

(Inkludes edge 4 on legs)


Edgeprofile 6

Wing

(Inkludes edge 8 on legs)


Edgeprofile 8

Rounded

(Inkludes edge 8 on legs)

PRICELIST

LONGBOAT Coffee Table



LONGBOAT Round Coffee Table				
W/3 cm plate thickness, H42, H48, H52 cm				
Item no.	Dimensions (cm)		Price (EUR)	
	Size Ø (cm)	High	Ash	Oak
F-LBRC3-90	Ø90	H42 or H48 or H52	801	1.113
F-LBRC3-80	Ø80	H42 or H48 or H52	707	983
F-LBRC3-70	Ø70	H42 or H48 or H52	614	853
F-LBRC3-60	Ø60	H42 or H48 or H52	530	723
F-LBRC3-50	Ø50	H42 or H48 or H52	473	634



Edgeprofile 2

Arched

(Inkludes edge 2 on legs)



Edgeprofile 3

Pisa

(Inkludes edge 8 on legs)



Edgeprofile 4

Straight

(Inkludes edge 4 on legs)



Edgeprofile 6

Wing

(Inkludes edge 8 on legs)



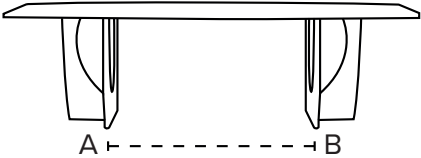
Edgeprofile 8

Rounded

(Inkludes edge 8 on legs)

INFO

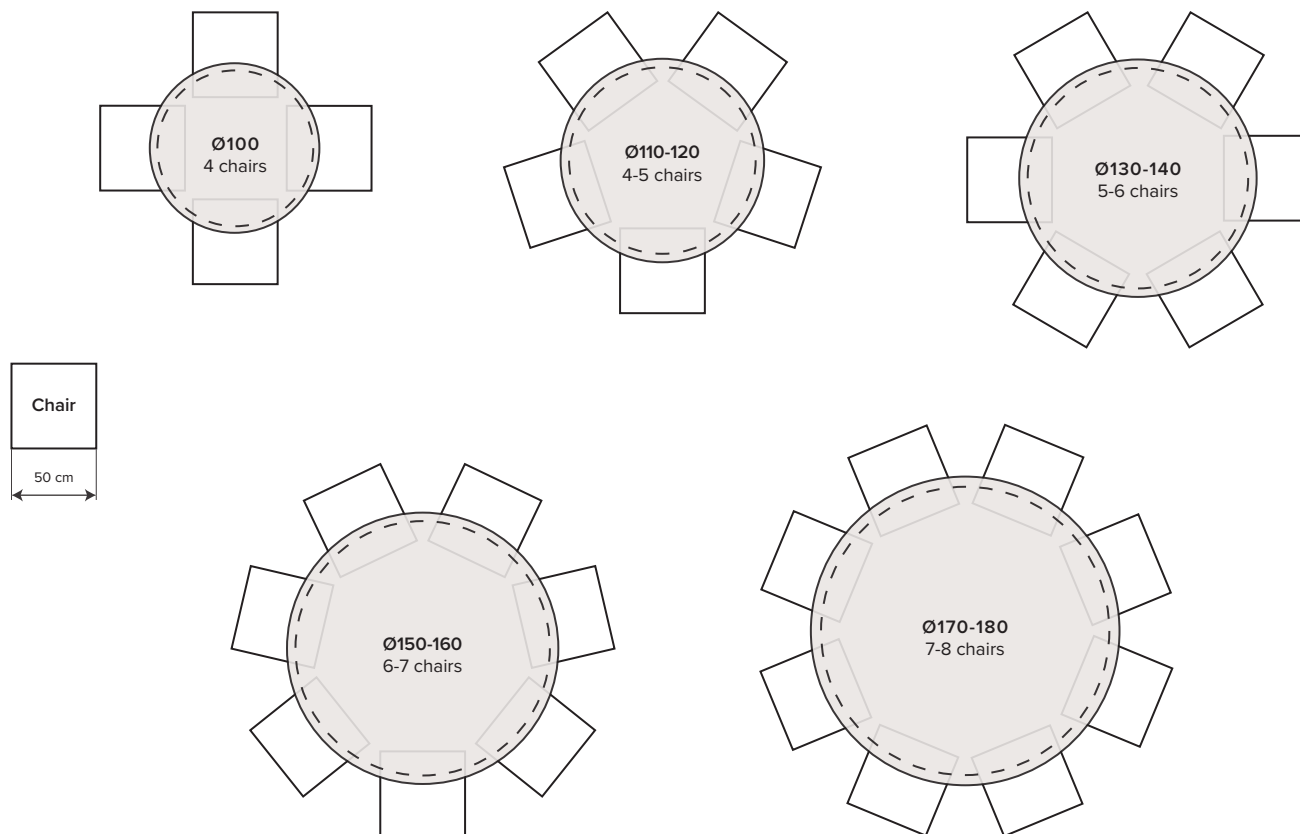
Distance between legs on the barrel-shaped dining table

Table	Table length	A-B measure (cm)
	260X120	130
	240x120	110
	220x110	90
	200x110	70

**The distance between the legs. This gives you an idea of how many chairs to fit in.*

NUMBER OF CHAIRS AROUND ROUND TABLES

IMPORTANT! The illustrations are for guidance only and may vary depending on leg placement and the size of the chair.





FSC® CERTIFICATE

A commitment for a better tomorrow

We are happy to announce that from 2021 we have achieved the certification that enables us to offer FSC®-labelled products. FSC® stands for "Forest Stewardship Council®" and is an international non-profit organisation dedicated to promote responsible forestry. FSC® certifies forests all over the world to ensure that they meet the highest environmental and social standards.

By signing this contract, we have committed ourselves to living up to stricter social requirements and a more sustainable production. We are proud of supporting the FSC® with their work in looking after the forest workers and the wood industry, as well as fighting unsustainable, illegal forestry and deforestation.

The FSC® certification is one of our key initiatives in creating a more sustainable production. We acknowledge that this sustainable transition is a longer journey and not something that happens overnight. But each day they we are committed in doing a little better than yesterday and keep making progress in this matter.

PLEASE VISIT OUR WEBSITE FOR
MORE FSC® RELATED INFORMATION

www.kristensen.com



The mark of
responsible forestry

WOOD COLOURS



Images for guiding purpose only!

The wood structure and colour will vary from ash and oak.

We therefore recommend using the wood samples/exhibition furniture to get a more accurate impression.



ASH C3 / OAK C3
Lacquered

We treated this wood with lacque.

C3 are only made for products without patination.



ASH C4 / OAK C4
Natural oiled

We treated this wood with our 'Natural oil'.



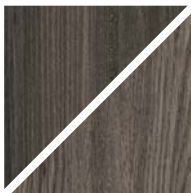
ASH C6 / OAK C6
White oiled

We treated this wood with our 'White oil'.



ASH C8 / OAK C8
Soaped

We treated this wood with soap.



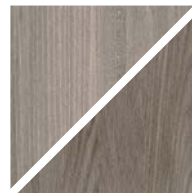
ASH C11 / OAK C11
Dark grey oiled

We treated this wood with our 'Black oil'.



ASH C12 / OAK C12
Antique brown oiled

We treated this wood with our 'Antique brown oil'.



ASH C13 / OAK C13
Light grey oiled

We treated this wood with our 'Light grey oil'.



ASH C14 / OAK C14
Black stained & oiled

We treated this wood with black stain, and treated it with a wax oil.

*** We recommend choosing the black matte lacquer color C44 for tabletops and chairs!**



ASH C15 / OAK C15
Mocca brown oiled

We treated this wood with our 'Mocca brown oil'.



ASH C16
Warm white oiled

We treated this wood with our 'Warm white oil'.

C16 is only for ash



ASH C20 / OAK C20
Grey brown oiled

We treated this wood with our 'Grey brown oil'.



ASH C44 / OAK C44
Black matt lacquered

We treated this wood with black stain, and treated it with matt lacque.

C44 is only for products without patination.

***Color C14 is a black stain with oil on top, which requires careful and frequent oiling. If this is not adhered to, there is a risk that the black underlying stain will rub off.**



For more information about maintenance, please visit our website:
WWW.KRISTENSEN.COM



We also offers our own repairolls for our products
- contact us if you need a pricelist.

WOOD FINISH

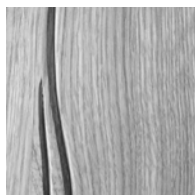


UP

Without patination

The wood is planned and sanded to achieve a smooth surface.

With few and smaller knots.

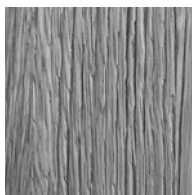


SC

Soft Cracks

Naturally occurring cracks are made more visible which gives a rustic look with cracks in the surface.

May contain more and larger knots.



RL

Raw Look

We brush off the layer of softer wood which gives a look of wood that has been roughened by natural wear.

May contain more and larger knots.



FK

Filled Knots

The knots are filled and the wood is planned and sanded to achieve a smooth surface.

Only for OAK!

OTA YHTEYTTÄ

MITTATILAUSPÖYDÄT

Voimme tehdä kaikkia pöytämallejamme mittojen mukaan. Mittatilaustuotteet vaativat erikoiskäsittelyä: materiaalin käsittelyä, uusia piirroksia, työstökoneiden asetusten kohdentamista sekä tuotteiden paketoitua. Tästä johtuen mittatilaustuotteisiin lisätään aina erikoistyölisä, oli tuote suurempi tai pienempi kuin standardikoko. Jos esimerkiksi haluat pöydän pienempänä, lisätään lähimpää kokoa olevan tuotteen hintaan erikoistyölisä +15%.

Olen meihin yhteydessä lisätietoja saadaksesi!

Head office, Denmark

OSOITE:

Kristensen & Kristensen A/S
Storstrømsvej 44
6715 Esbjerg N
DK - Denmark

PUHELIN:

+45 75470303

FAX:

+45 75470304

KOTISIVU:

www.kristensen.com

MAIL:

kristensen@kristensen.dk

TILAUKSET:

order@kristensen.dk

REKLAMAATIOT:

claim@kristensen.dk

Edustaja Suomessa

Jokko Salmevaara

—

✉ jokko.salmevaara@boknas.fi

☎ +358 040 195 8886